

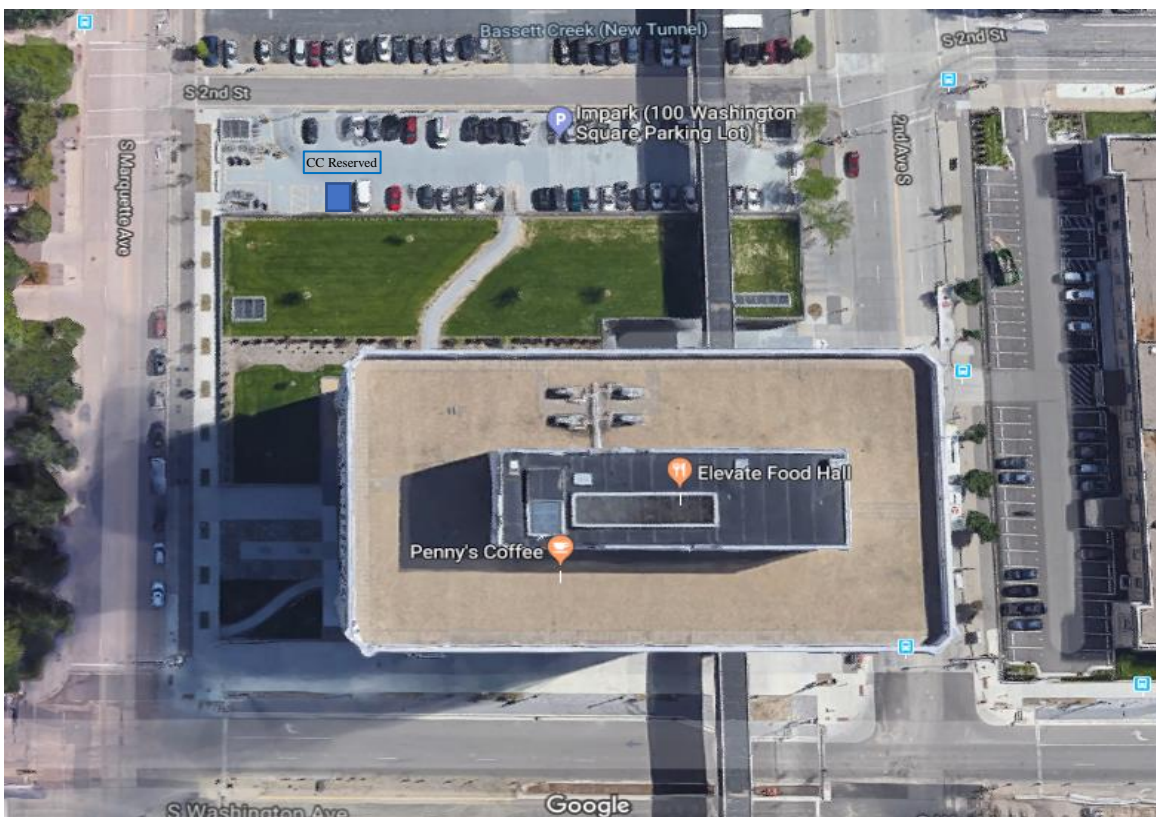
# Driving & Parking Directions



100 Washington Avenue South, Suite 1700  
Minneapolis, MN 55401-2138  
T 612.339.7300  
F 612.336.2940

## Parking

Chestnut Cambronne provides validated parking for clients parking in the surface lot behind our building. To enter the surface lot from Washington Avenue South, turn north either onto South Marquette Ave. or Second Ave. South, and then turn onto South 2nd St. The entrance to the lot is on South 2nd Street. There are two reserved parking spots for Chestnut Cambronne, and the rest is open to the public, including Chestnut Cambronne clients. There is additional metered street parking adjacent to the building and non-validated parking may be available at the Minneapolis Central Library, The Depot, and Marquette Plaza Garage.



### **From Minneapolis-St. Paul Airport**

Take MN-5 East to MN-55 West.

Continue left on MN-55 West to MN-62 West.

Follow MN-62 West. Exit onto 1-35W North.

Keep left at fork and continue onto MN-65.

Follow signs for Downtown/I-94 West.

Exit onto South 11<sup>th</sup> St.

Turn right onto 3<sup>rd</sup> Ave. South.

Turn left onto South Washington Ave., the building will be on the right.

### **By Light Rail From Minneapolis-St. Paul Airport**

A 25-minute ride via light rail connects the airport to downtown Minneapolis.

Board the light rail at the airport and disembark at the Nicollet Mall Station.

Take a short walk East along South Marquette Ave.

Once you cross South Washington Ave., the building will be on the right.

### **From the East on 1-94**

Take 1-94 West to Exit 234B for 7th St toward Hospital .

Slight right onto South 7th St.

Turn right onto 11th Ave. South.

Turn left onto South Washington Ave., the building will be on the right.

### **From the West On 1-394**

Take 1-394 East, keep left towards the downtown exits, and exit onto Washington Ave. North.

Turn right on Washington Ave. North.

Turn left onto South Marquette Ave., the building will be on the right.

### **From the North on 35W**

Take 1-35W South to exit 17C for Washington Ave.

Turn right onto South Washington Ave., the building will be on the right.